

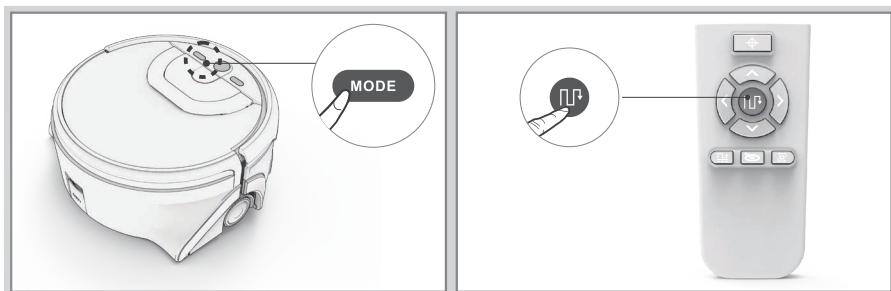


## 4. How to Start

- On: Press  for 1s, and loose when the sound [beep] heard.  
\* Voice alert "Please select mode" when the button light is on.  
Off: Press  for 3s, and loose when the sound [beep] heard.
- Please press the **MODE** button to switch cleaning modes. When green light flashing, tap **MODE** constantly till the needed cleaning mode is on.  
Alternatively, press the specific cleaning mode button on the remote control.
- The robot will enter sleep mode if no command is received in 3 mins.



## 5. Attention

- Please clean the water tank, main brush, scraper and the filter after each use.



- 1 Remove the water tank from the robot and rinse with water.
- 2 Remove the cleaning main brush and rinse with water.
- 3 Remove the filter from the water tank and rinse with water.

# ILIFE

## Shinebot | W400s

### Quick Start Guide



## ILIFE Customer Service

Toll-Free Number:

**1-800-631-9676** (USA and Canada)

(Mon - Fri: 9:00 A.M. - 5:00 P.M. CST)

Email: [support@iliferobot.com](mailto:support@iliferobot.com)

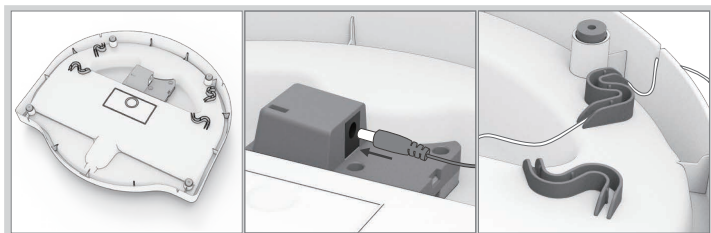
For more detailed information, please visit: [www.iliferobot.com](http://www.iliferobot.com)

## 1. Charging

### • Recharge the robot on the charging dock.

\* The robot can't return to charging dock automatically, and needs to be manually recharged.

#### ■ Step1



- ❶ Turn the charging dock upside down.
- ❷ Plug in the adaptor.
- ❸ Secure wires around the cable through.

#### ■ Step2

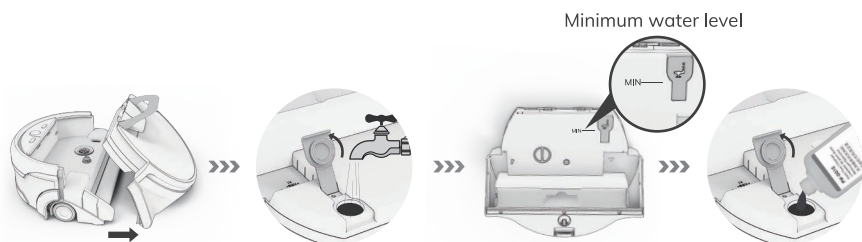
- Put the charging dock at somewhere dry and safe, and manually take the robot back to charging dock for recharge.

Voice alert: Charging will start soon.



## 2. Add water and cleanser

- ❶ Press down on the water tank release button, pull the handle up to detach the tank. Turn the integrated water tank upside down.
- ❷ Open the clean water tank cap and fill up the tank with clean water.
- ❸ After filling up the water, erect the water tank to ensure that the water volume exceeds the minimum water level.
- ❹ Add the specific Shinebot cleanser (if necessary).



Note: 1. Do not use distilled or purified water.  
2. Do not add any detergents.

## Instructions

Cleanser to water dilution ratio is 1:100. Add a bottle cap of cleanser in the clean water tank before each cleaning.

**Attention:** Using excessive cleanser can damage the Shinebot, which should be avoided.



### The Shinebot Hard Floor Cleanser

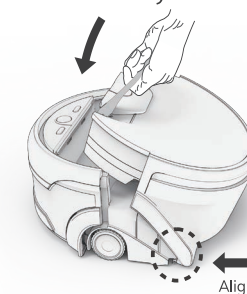
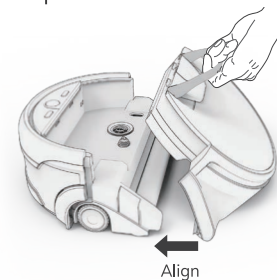
This concentrated cleanser is available to all kinds of hard floors that are sealed well.



**Attention:** Please keep it out of reach from children. If the ingestion happens to somebody, drink 2 cups of or more water or milk and visit the doctor immediately, do not induce vomiting.

## 3. Install the water tank

- ❶ Align the bottom of the integrated water tank with the main body and push forward.
- ❷ Align the ends and move the water tank to insert it into the main body.



- ❸ Press down, and a "click" will be heard if installed properly.

